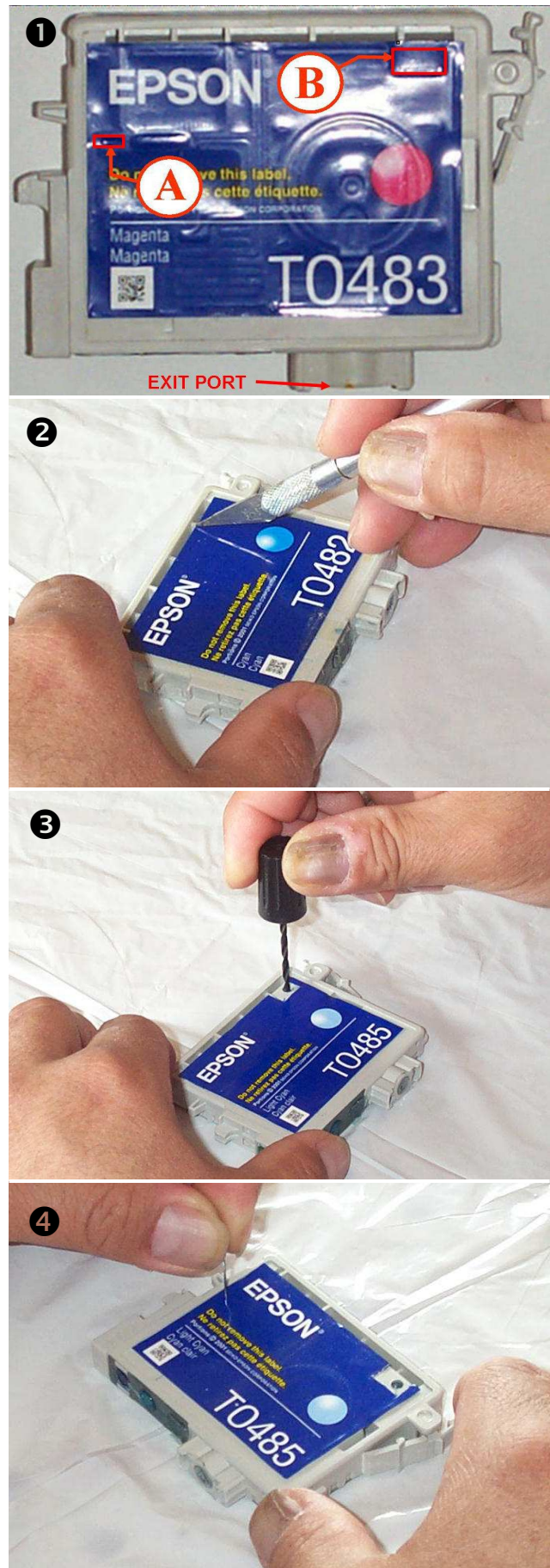


## REFILLING INSTRUCTION FOR EPSON R200/300 OEM CARTRIDGES

1. Though not absolutely necessary, it is advisable inserting a 4 mm plug into the exit port to prevent any possible ink leakage from the cartridge. If the cartridge has been refilled by this method before, skip to step 6 on page 2.
2. Place the cartridge on its side on the table with the label facing up. Under proper lighting, locate the two indentations on the label marked (A) and (B) in picture ①.
3. Use a sharp knife or razor blade to cut out a rectangular piece of the label at the indentation (B), exposing the cartridge casing underneath as shown in ②.
4. Use the drill tool to make a clean 1/8" (3 mm) hole through the plastic casing at the center of the rectangle cutout as shown in ③. The ideal location of the hole is 3/8" (10 mm) from the right edge and 5/16" (8 mm) from the top edge. Take extreme care NOT to penetrate the cartridge casing deeper than 3/16" (5 mm) or the depth limit set by the drill tool.
5. Use a very fine sewing needle or pin to poke a tiny pin hole through the label at indentation (A) as shown in picture ④. The needle MUST NOT enter the cartridge body by more than 1/8" (3 mm).

... Continued on Page 2



8. Attach the special plastic nozzle to the syringe and fill it full with the correct color ink (12.5 ml).
9. Hold the cartridge in the upright position, so that the 1/8" inlet hole is on the upper right corner. Insert the nozzle tightly and securely into the inlet hole as show in ⑤.
10. Rotate the cartridge 90°, so that the syringe attaching to the hole is now in the lower right hand corner and the tiny pin hole is on the 12 o'clock position as shown in ⑥. Slowly push the syringe plunger to inject ink into the cartridge. When ink starts squirting out of the pin hole, the cartridge is full. Pull back the plunger a little to stop the ink flow.
11. Rotate the cartridge back to the upright position as shown in ⑦. Carefully detach the plastic nozzle together with the syringe. Discharge any remaining ink in the syringe back into the ink bottle.
12. Carefully put the cartridge down on the table with label side up as shown in ⑧. Clean up any ink around the inlet hole and the tiny pin hole. Seal the inlet hole with hot glue or with the special rubber plug supplied with the kit. Make sure that it is airtight.
13. Reset the chip.
14. A piece of cellophane tape may be put over the tiny pin hole to prevent any accidental ink spill in case the cartridge is placed on its side with the label facing down, but it must be removed for refilling.

